

Apartment for Sale to Rosello



108 square meters | Bathrooms: 1 | Rooms: 2 | Locals: 5

Renovated apartment.

The property of 108 sq m. finely restored with quality materials, it is located on the first floor of a two-storey building.

- The apartment consists of a large entrance hall, living room with open kitchen, a bathroom with shower and tub, a corridor with a brick ceiling, two double bedrooms.
- The terracotta floor and the furnishings make the property elegant and welcoming. Autonomous heating.
- An attic used as a warehouse and laundry which is accessed via a comfortable staircase is an exclusive property.

Giulio poli is a charming village in the municipality of Rosello and is a small mountain community of medieval origin, the municipal territory embraces a tangle of hills covered with oaks, beeches and firs, arid pastures and immense green grasslands. Immersed in a natural setting of rare beauty. In about 35 minutes you can reach both the Adriatic coast and the ski slopes of Roccaraso. Pescara airport is 96 km away, Rome/Fiumicino intercontinental airport is 250 km away, while Naples airport is 182 km away.

Certifications

Energetic class:

.....

Property details

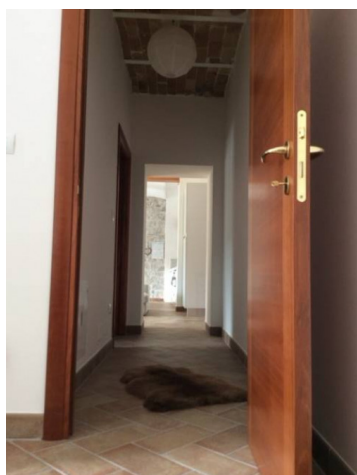
Ref: 123	motivation (Sale/rent): Sale
Typology (Flat, villa, etc): Apartment	Region: Abruzzo
District: Chieti	Municipality: Rosello
Price: € 80.000 negotiable	Total square meters: 108 square meters
Rooms: 2	Bathrooms: 1
Locals: 5	Current status: Excellent
Independent heating: Independent	Current status: Free at the deed
available: Yes	Balconies: Current
Max bed places: 6	Matrimonial beds: 2
Kitchen: Open kitchen	

Features

Tv Antenna: Autonomous	Tv SAT: Autonomous	Air conditioned
Electrical System: In accordance	Suspended sanitary ware	Jacuzzi
Shower	Wood fixtures	Jalousies

Nearby

Soccer fields	Playground	Public Transports	Bar
Post offices	Municipal offices		









Agenzia del territorio CALISTO FABBRICATI Ufficio Provinciale di Chieti		Pubblicazione prototipo n. 0000077 del 11/11/2007 Coordinatore di P.L.A. di Torino: Renato PIANCO TERZO BIENNIO n. 14/8	
Dimensione (m. x m.): Lunghezza: 10 Larghezza: 8 Perimetro: 36 Area: 80		Autore: Giulio Galasso Disegnato da: Galasso Progettato da: Galasso n. 689	
Scala 1:100			
PIANO TERZO PIANO PRIMO 100 m.			
PIANO SECONDO SOTTOTERRANEO			